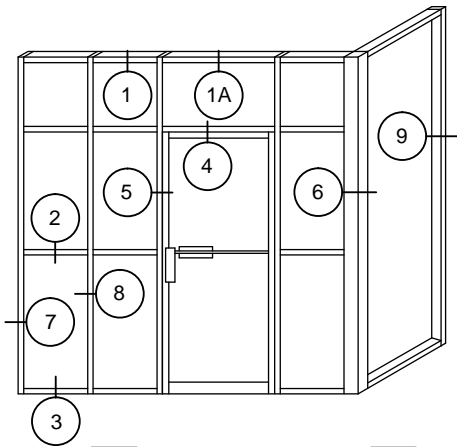
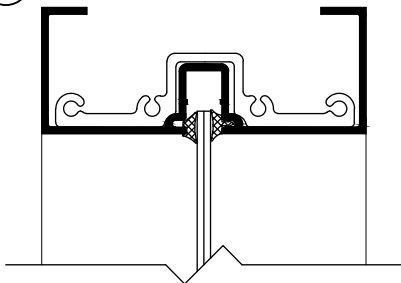


# 175 SERIES FLUSHLINE DETAILS

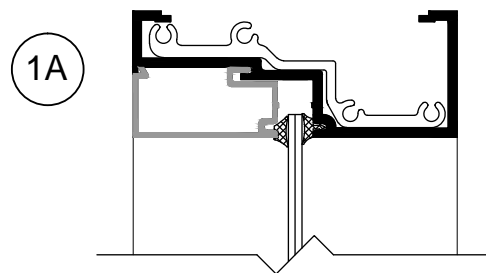
# B2



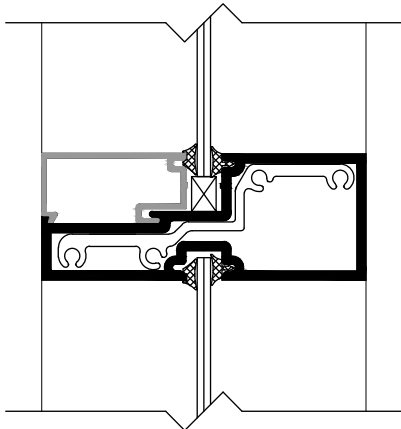
- 1 3/4" X 4 1/2" STOREFRONT AND ENTRANCE FRAMING SYSTEM FOR SINGLE GLAZING.
- OFFERS A NARROW 1 3/4" SIGHTLINE AND IS TOTALLY COMPATIBLE WITH THE DESA 100, 350 AND 500 SERIES ENTRANCE DOOR PACKAGES.
- THIS SYSTEM IS PRIMARILY USED FOR INTERIOR AND VESTIBULE CONDITIONS AND OFFERS A 90 DEGREE CORNER POST WHICH ALLOWS FOR EASY VESTIBULE DESIGN AND LAYOUT AT THE INTERIOR OF MAIN ENTRANCE AREAS.
- TUBULAR PROFILED EXTRUSIONS WITH SHEAR BLOCK JOINERY.
- CLEAR AND BRONZE ANODIZED FINISHES ARE STANDARD . OTHER FINISHES ARE OPTIONAL.



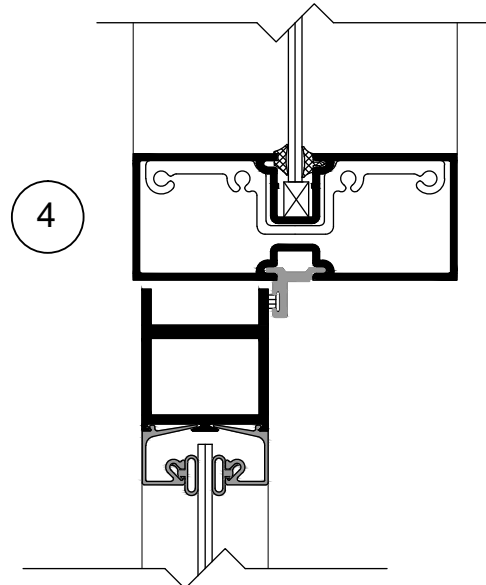
1



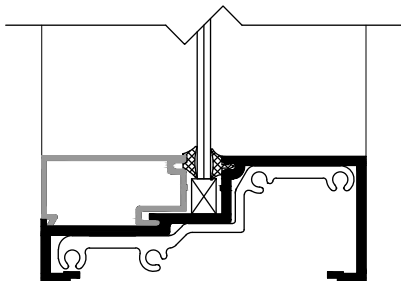
1A



2



4

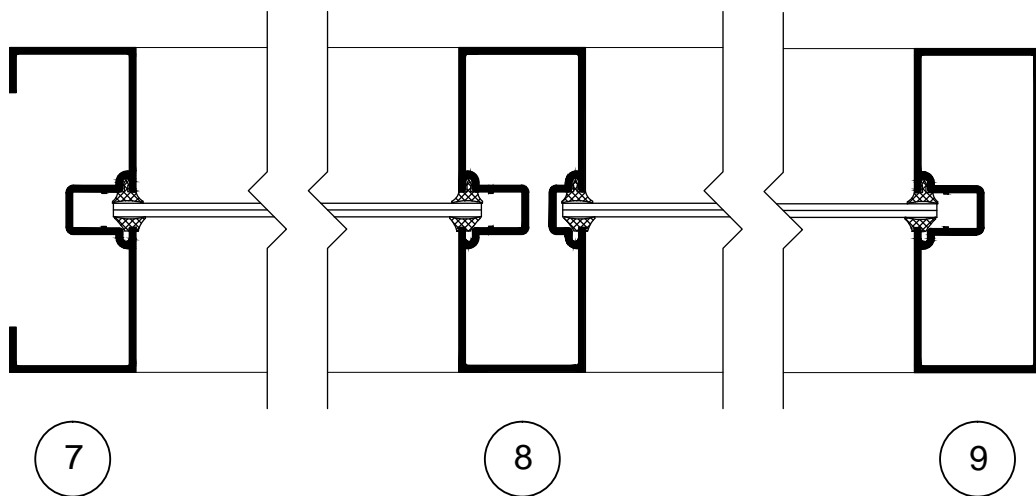
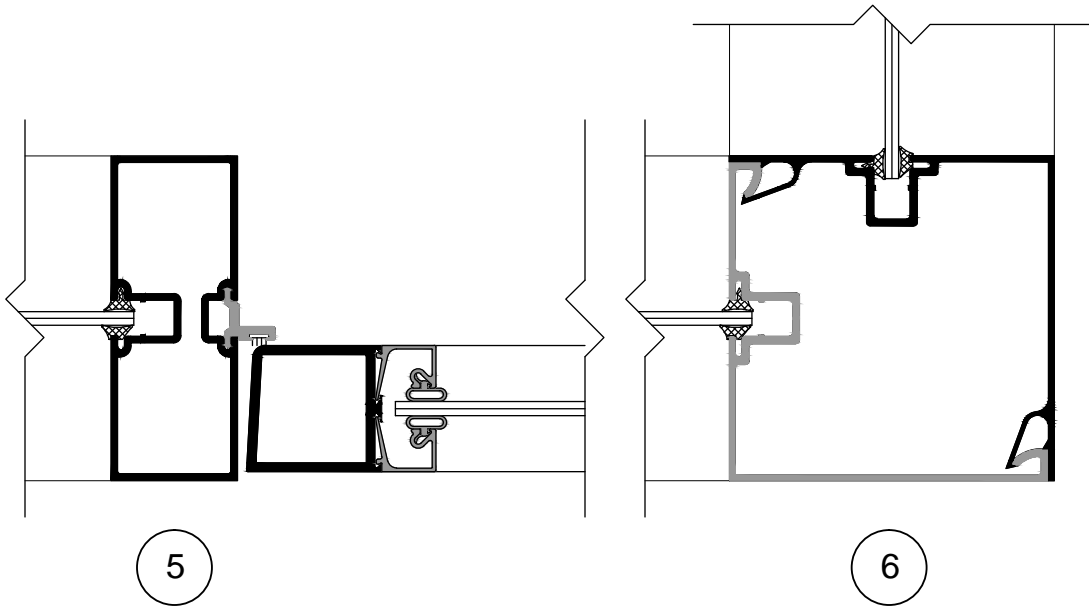


3

SCALE: 3/8" = 1"



providing innovative solutions that meet client needs.



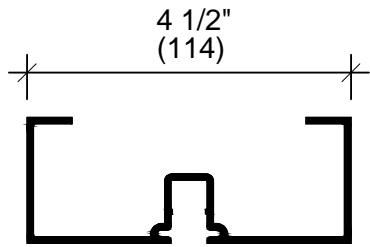
SCALE: 3/8" = 1"



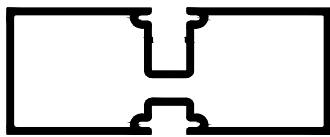
providing innovative solutions that meet client needs.

# 175 SERIES FLUSHLINE FRAMING PARTS

B4



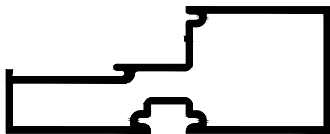
F1751  
PERIMETER  
HEAD - JAMB



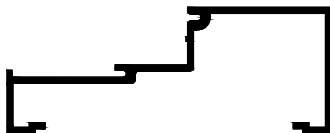
F1752  
MULLION



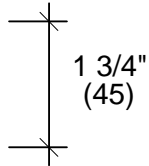
F1755  
SILL STOP



F1753  
HORIZONTAL



F1754  
SILL



F1756  
DOOR STOP



A13  
SHEAR BLOCK



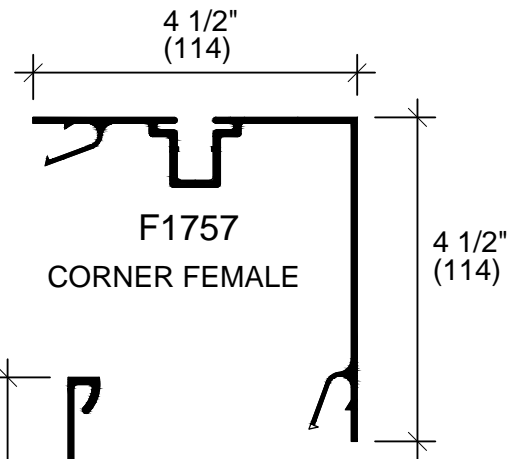
A12  
SHEAR BLOCK



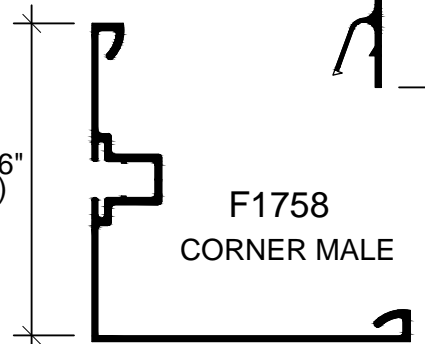
N213  
FIXED GASKET



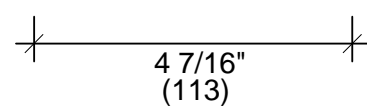
N215  
FACE GASKET



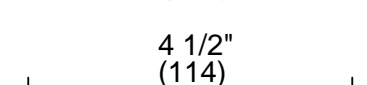
F1757  
CORNER FEMALE



F1758  
CORNER MALE



F1759  
CLOSED BACK  
HEAD - JAMB



D 407  
CLOSED BACK  
TUBE

SCALE: 3/8" = 1"



providing innovative solutions that meet client needs.